



## CommandCenter Secure Gateway

Centralized access and control of your entire IT infrastructure

### CC-SG E1

- 2U form factor
- Dual power supplies

### CC-SG V1

- 1U form factor
- Single power supply

## Secure Access and Control of Distributed IT Assets

### Simplify access and control of your IT infrastructure with a single appliance

Raritan's CommandCenter Secure Gateway provides IT organizations with integrated, secure and simplified access and control of all technology platforms at the application, operating system and BIOS-level. By managing all the devices in your centralized, distributed data centers and remote locations, it lowers the cost of purchasing, implementing and maintaining additional access points and eliminates truck rolls.

By offering a consolidated view from a single point of access, it helps streamline operations, improves staff efficiency by saving time when responding to trouble tickets and helps users be more proactive so expensive fixes can be avoided.

Designed for midsize to enterprise data center operations, this feature-rich Linux-based appliance also includes:

- Secure, single sign-on to a single IP address for managing multiple Raritan Dominion® KXII/SX/KSX, Paragon® II, IP-Reach® and Dominion PX intelligent power distribution units
- Centralized, role-based policy management including controlled access privileges
- The ability to monitor, diagnose and resolve infrastructure problems
- HTML Access Client interface, which allows the user to easily locate managed equipment in customizable views, including favorites and recently accessed nodes
- Manages remote access as well as power control using HP integrated Lights-Out (iLO), Dell Remote Access Control (DRAC), IBM Remote Supervisor Adaptor (RSA), and IPMI service processors and RDP, VNC, and SSH In-band applications
- Supports Universal Virtual Media control, view only, or deny access policies through Dominion KX II devices
- Consolidated audit trail including detailed activity reports

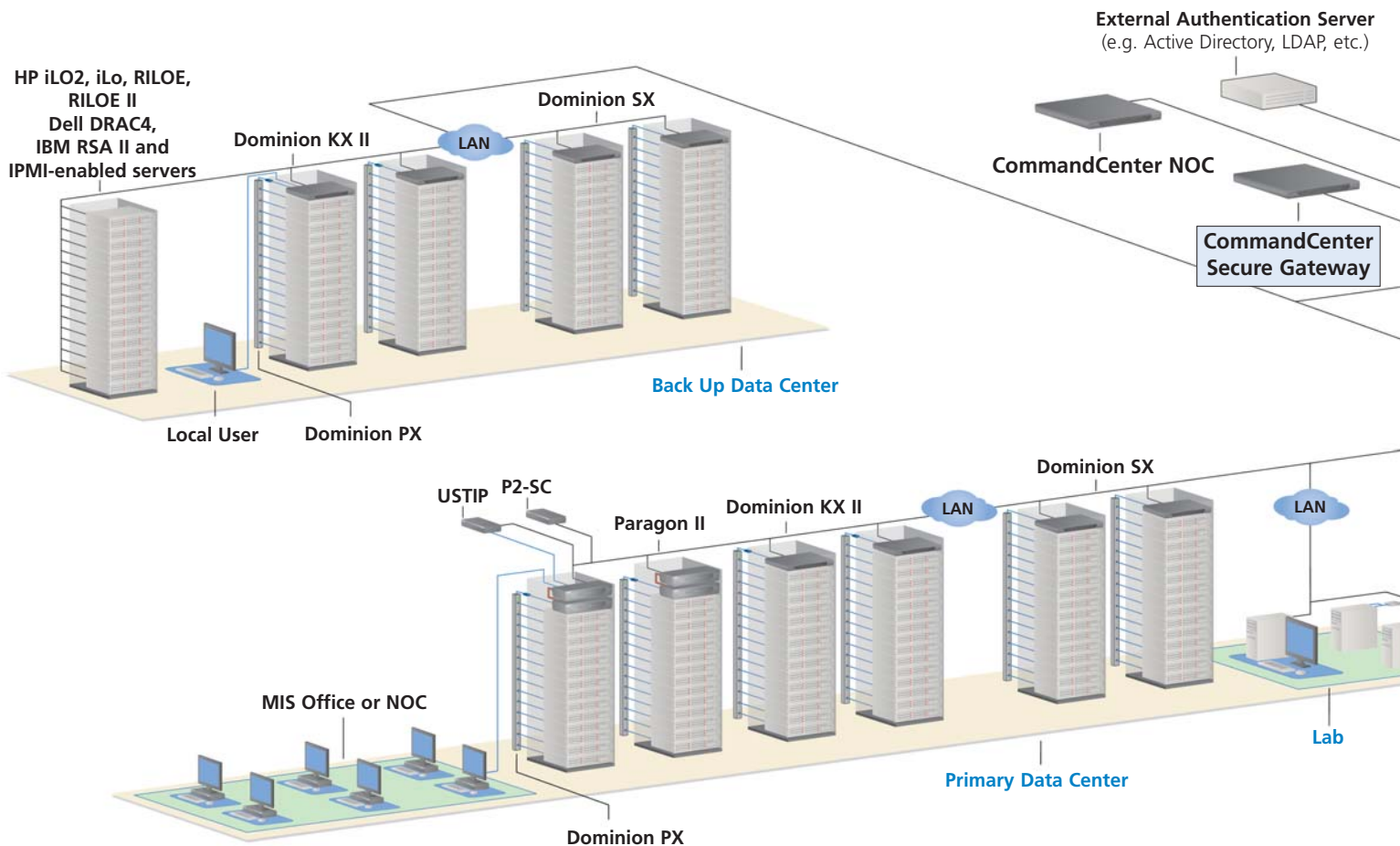
### Centralized access and control for distributed IT assets

- Node view, which allows users to easily identify and access any target system through a variety of interfaces, including in-band and out-of-band KVM, Serial, embedded or in-band software applications as well as power control
- Comprehensive reporting capabilities to provide detailed information on assets, availability of devices, nodes and users
- Low security profile Linux-based appliance architecture

# A New Dimension in IT Infrastructure Management

## Robust security

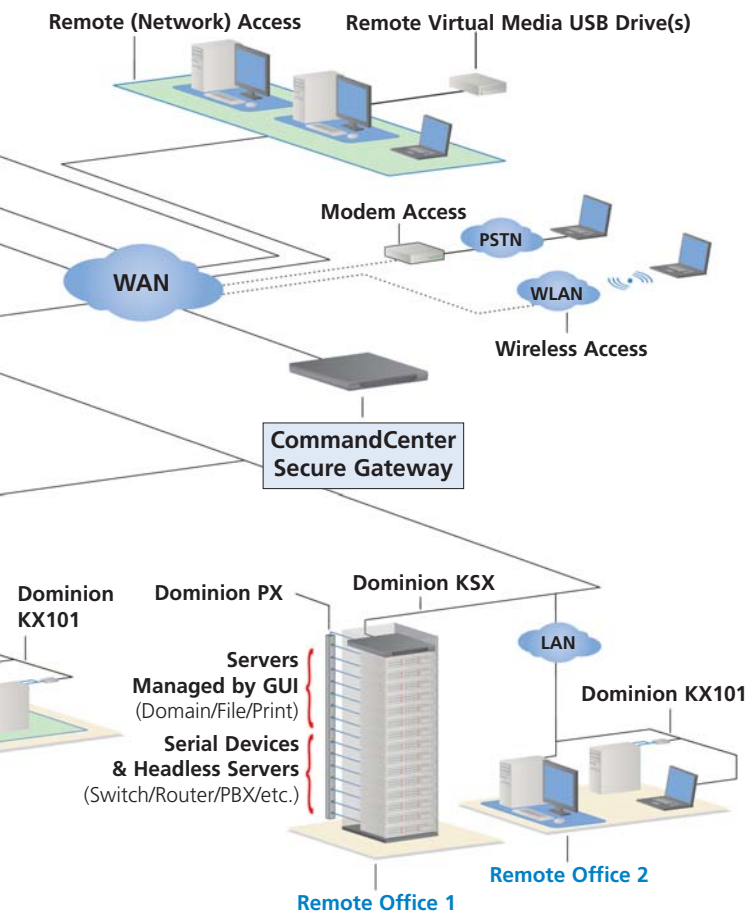
- Low security profile Linux-based appliance architecture
- A powerful policy management tool allows access and control based on a broad range of user customizable criteria, including time of day, location, application, operating system, department and function
- Available 128-bit AES encryption for end-to-end node access activity through AES-enabled Dominion devices
- Support for a broad range of authentication protocols, including LDAP, Active Directory®, RADIUS and TACACS+ in addition to local authentication and authorization capabilities
- Ability to import user groups from Active Directory servers for user authentication
- Support for Second Factor Authentication with SecureID on RADIUS servers
- IP-based Access Control Lists (ACL), which grant or restrict user access by IP address
- Proxy mode for secure access to devices through firewalls/VPNs
- Strong user password authentication
- SAS 70 compliance – after a configurable amount of failed login attempts, the user ID will be locked out until unlocked by the administrator
- Security hardened to protect the system from vulnerabilities and unauthorized root-level access
- Security login banner with customizable company logo and Restricted Service Agreement text requiring consent



# Secure, Centralized Access and Control

## High availability

- Dual Ethernet connections for automatic failover
- Appliance redundancy through primary and secondary CommandCenter Secure Gateway deployment on different subnets and/or geographical locations
- Support for multiple Authentication, Authorization and Accounting (AAA) servers
- Additional redundancies and failover mechanisms, including dual power supplies (available on certain models only), dual Ethernet connections, ECC memory and dual hard drives
- Dual processors with dedicated memory for each processor (available on certain models only)



## Ease of management for administrators

- Ability to determine individual user access policies to Universal Virtual Media on supported Dominion KX II devices
- Guided set up for simplified security policy creation during deployment
- Backup and restore configurations of Raritan appliances
- Syslog integration
- SNMP traps/event support to forward critical alerts to SNMP Manager (e.g. HP OpenView)
- Integrated access to CommandCenter NOC for seamless systems and network monitoring, alerting and remediation
- Maintenance Mode to perform maintenance functions on system level activities without user interruptions
- Customizable "Message of the Day" to allow for textual message to be viewed by all system users upon their login
- Raritan appliance discovery with device availability status, health updates and alarms for Dominion Series, Paragon and IP-Reach
- Central storage of firmware for Raritan appliances for upgrade through centralized and automated upgrade manager function
- Task Manager and Notification Manager to schedule tasks and review status and results

## Ease of management for users

- Intuitive HTML Access Client including favorites, recently accessed and preferred search capabilities
- Customizable device views that can be defined by target, OS, appliance type, geographical location, site name, organizational structure, user-defined fields or any combination of categories
- Secure Chat feature allows users to troubleshoot problems collaboratively
- Intuitive and simplified view allowing for both node access and power control (on, off, power cycle, or graceful shutdown) from one screen

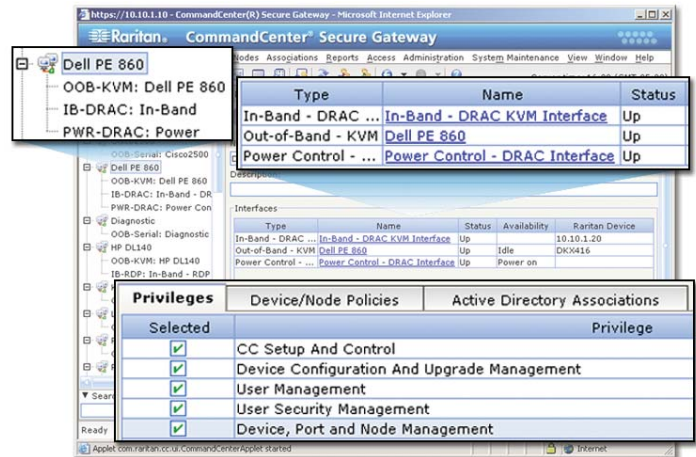
# Specifications



CC-SG E1

CommandCenter Secure Gateway	CC-SG V1	CC-SG E1
Form Factor	1U	2U
Dimensions (DxWxH)	17.3" x 24.2" x 1.75"; 440 x 615 x 44 mm	17.3" x 27.5" x 3.5"; 440 x 699 x 89mm
Weight	23.80lb; 10.80kg	44.1lbs; 20kg
Power	Single Supply (1 x 300 watt)	Dual Supply (2 x 500 watt)
Operating Temperature	10 - 35 C; 50 - 95 F	10 - 40 C; 50 - 104 F
Mean Time Between Failure (MTBF)	38,269 hours	53,564 hours
KVM Admin Port	(DB15 + PS/2 or USB Keyboard/Mouse)	(DB15 + PS/2 or USB Keyboard/Mouse)
Serial Admin Port	DB9	DB9, DB10
Console Port	2 x USB 2.0 Ports	2 x USB 2.0 Ports
<b>Hardware</b>		
Processor	AMD Opteron 146	2 x AMD Opteron 250
Memory	2 GB	2 x 2 GB
Network Interfaces	(2) 10/100/1000 Eth. (RJ45)	(2) 10/100/1000 Eth. (RJ45)
Hard Disk & Controller	(2) 80 GB SATA @ 7200 rpm, RAID 1	(2) 74 GB SATA @ 10000 rpm, RAID 1
CD-ROM drive	DVD-ROM	DVD-ROM
<b>Remote Connection</b>		
Protocols	TCP/IP, UDP, RADIUS, LDAP, TACACS+, SNMP, SNTF, HTTP, HTTPS	
Warranty	Two years with Advanced Replacement* Guardian Extended Warranty Also Available	

## One View of the Entire Enterprise



- Centralized authentication, access and control
- Simplified access with "One Click" to target device
- Sophisticated policy management
- Comprehensive reporting capability
- Appliance-based solution with no access to underlying OS

## Scalable and flexible access

- Supports third-party HP iLO, iLO2, RILOE, RILOE II, IBM RSA II, Dell DRAC4 devices and IPMI-enabled servers, secure, consolidated, in-band access methods like RDP, VNC and SSH as well as generic web browser interface
- SSH for CLI access to serial targets connected to Dominion SX
- Multiplatform Client provides access via multiple browsers (Internet Explorer, Mozilla™, Firefox)

When you're ready to take control, do it with CommandCenter Secure Gateway.

Call 1.800.724.8090 or visit [www.Raritan.com/cc-sg](http://www.Raritan.com/cc-sg)

©2007 Raritan, Inc. All rights reserved. Raritan®, When you're ready to take control®, CommandCenter®, Dominion®, Paragon® and IP-Reach® are registered trademarks of Raritan, Inc. or its wholly-owned subsidiaries. All other marks are trademarks or registered trademarks of their respective owners.

\*To qualify for advanced replacement under the standard warranty, you must register the product at [http://www.raritan.com/standard\\_warranty](http://www.raritan.com/standard_warranty).

Raritan is a leading supplier of solutions for managing IT infrastructure equipment and the mission-critical applications and services that run on it. Raritan was founded in 1985, and since then has been making products that are used to manage IT infrastructures at more than 50,000 network data centers, computer test labs and multiworkstation environments around the world. From the small business to the enterprise, Raritan's complete line of compatible and scalable IT management solutions offers IT professionals the most reliable, flexible and secure in-band and out-of-band solutions to simplify the management of data center equipment, applications and services, while improving operational productivity. More information on the company is available at [Raritan.com](http://www.raritan.com).